

**DRAFT**

# Vision for Jewish Auckland

Please note that this is an open vision as we still welcome your input and other groups' feedback as well.

With our upcoming big move on the horizon, a vision committee was formed to bring together the information from conversations, emails, discussions and initial survey findings that we've had with members, young members, other Jewish groups and individuals in Auckland.

Our collaboration has produced an exciting vision for the future of a Jewish Community in Auckland. We hope you will be excited too.

In the history of the Jewish community in Auckland, there has rarely been an opportunity to reinvent ourselves. The Woolf Fisher Trust's generosity opened a world of possibilities beyond what most could have imagined. We can now overcome many challenges which seemed unsolvable.

To that end, we endeavoured to project our vision of a thriving future which is a vibrant, inclusive and accessible centre for Jewish involvement, education, faith, support and community.

## Objectives we set for ourselves and the future community

### REVIVE

Kick start all things Jewish in Auckland from the 2022 move to Remuera.

### EDUCATION

Establish a youth education centre of excellence centred in Kadimah School.

### ATTRACTION

Create an atmosphere which appeals to anyone and any organisation with a Jewish connection to Auckland.

### RELIGION

Allow religious organisations to flourish, in an environment that is focused on spiritual fulfilment.

### SOCIAL

Develop organisations which create opportunities for strong social interaction.

### DESTINATION

Make our new site the aspirational destination for Jewish immigrants from around the world.

### ENVIRONMENT

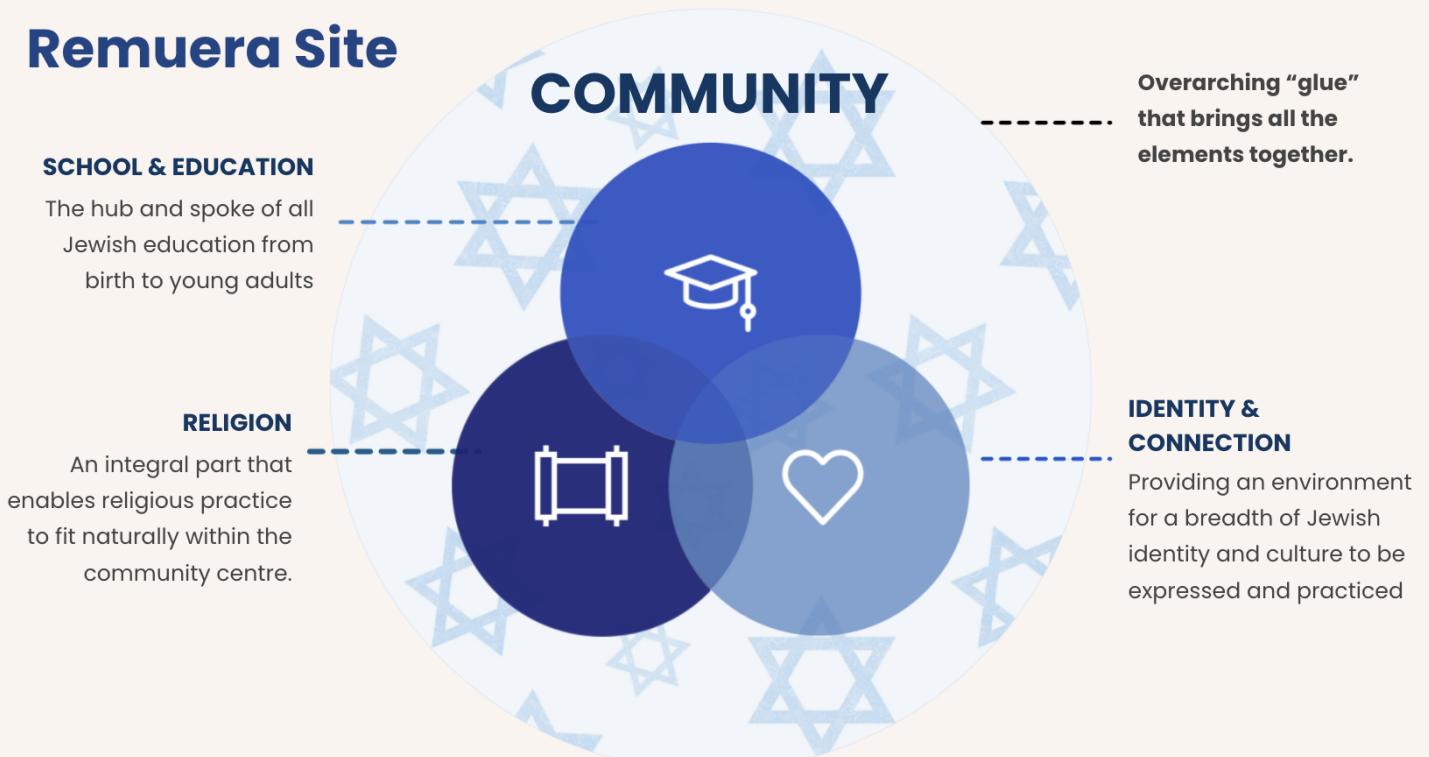
Support New Zealand's transition to a net-zero carbon future, through both design and through everyday practices.

### CONNECTION & RETENTION

Launch new initiatives which anchor Jews to Auckland and provide a platform for sustainable Jewish life.

## We envision the new site will encompass the following 3 main elements -

### Remuera Site



# The now...

There is overwhelming agreement and desire for a Jewish central hub in Auckland.

"Community seems to only be available through religious entities"

"I can't identify the social and cultural beat of my community"

"I'd love to learn about Jewish cooking where can I go for that?"

"I'm new to Auckland, where do I meet other Jewish people"

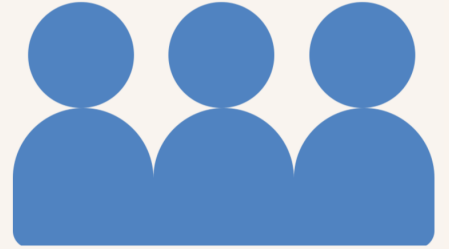
"...As a parent, where can I hang with other Jewish parents for a play date"

**We must seize this once-in-a-lifetime chance to reset and reinvent the Jewish community in Auckland.**

# Jewish Auckland

The **heart** of our community.

A new central club that meets community needs in a welcoming space and offers opportunities to gather, socialise and connect for all who choose to identify as Jewish in Auckland.



## A Thriving Jewish Hub

### IDENTITY

An environment to express our identity and culture with like-minded people.

### JEWISH

Feeling Jewish through religion, identity and being together.



### INCLUSIVE

Create a strong sense of belonging for individuals and groups regardless of background or affiliation.

### CONNECTION

Building meaningful relationships through social opportunities and play.



## We intend to appeal to...

- Affiliated Jews
- Unaffiliated Jews
- All who choose to identify as Jewish in Auckland.

# The Demographics

## HIGH LEVEL CONCEPT



### 0-5 years old

Baby clubs, parent coffee groups progresses to, Friday Kabbalat Shabbat, progresses to Preschool



### 5-13 years old

Kadimah School, extra curricular, STEAM Holiday programmes, Jewish studies programmes.



### 13-18 years old

Youth groups, hebrew club, work with MOL, Zed Fed for Gap year programmes, participation in school projects.



### University Students

Speakers, hebrew club, "Pub Quiz", Leadership development mentoring.



### Young professionals

Mental and social interaction with my peers in an environment that keeps me connected to my community.



### Young families

Organise play and education leading to social opportunities to mix with families going through the same phase of life as themselves - Feeder to Kadimah School.



### Prime of life

Providing an anchor point to keep individuals connected to the community through activities, events and informal social opportunities with others who are "wired like me".



### Golden age

A welcoming destination to be with my contemporaries to share informal socializing and organised play..



A natural flow between the different age groups, capturing them at each stage thus building **a sustainable growing community**

## WHAT'S POSSIBLE

SPORTING GROUPS

HANGOUT SPACE

PARENTS GROUP

BUSINESS INCUBATOR

FITNESS CLUB

COFFEE CLUB

CARD CLUBS

WHISKEY CLUB

TABLE GAMES

SOCIAL EVENTS

ART CLASSES

BOOK CLUB

And more...

## Kosher Cafe

A new focal point in the heart of the community complementing the Auckland Jewish Club through which we can express our culture, identity and traditions through food.



## How might it work?



### JEWISH AUCKLAND MEMBERSHIP

Accessible flat fee for Jewish Auckland membership and a low barrier entry (e.g. Halachic genealogy not a prerequisite).

### ACTIVITIES

Pay for activities you participate in as you go (e.g. Bridge club membership, Parent coffee club, event tickets etc).

### CONGREGATION MEMBERSHIPS (AHC and others)

The congregation membership fee includes membership and access to Jewish Auckland.

### JEWISH ORGANISATIONS

Jewish organisations on-site may charge a membership fee if one wishes to join them.



# Main Outcomes



## Revive

Revive regular Jewish identity, cultural and social activity of all types in Auckland



## Connect

Connect with the wider community and build meaningful relationships.



## Grow

Create a strong, sustainable community which welcomes immigrants and continues to grow.



## AUCKLAND HEBREW CONGREGATION

A specific vision for the AHC on the new site has yet to be worked through and is work in progress.

### WHAT WE DO KNOW IS THAT THE AHC WILL BE ABLE TO FOCUS ON ITS CORE OFFERINGS -

#### SHULE SERVICES

Spiritual, engaging and inclusive shule services. Accommodating different age groups.

#### PASTORAL CARE

Providing and sustaining pastoral excellence, through religious and spiritual leadership which is accessible, engaging and deeply trusted.

#### JEWISH EDUCATION

Following on from Kadimah Plus, rich interactive programmes, classes and events tailored for all age groups and interests.

#### BAR & BAT MITZVAH

Providing exceptional Bar and Bat Mitzvah classes, training and support to boys and girls coming of age.

# Vision Q&A

The following are questions asked at the event

## 1. Management and operation of the Site

The main organisations on the new site from day one will be the Auckland Hebrew Congregation, Kadimah School, Kadimah Pre-School and Jewish Auckland Club.


Each organisation will continue with their respective Management structure for provision of their services to visitors, members or parents.

Representatives from each organisation will be part of a management committee which has oversight of how each entity uses the site. Similar to a Body Corporate.

An administration Hub headed up by a Community Manager and Finance director will provide administration and accounting services for the main organisations and any other group who wants to use this service. The Hub structure is being implemented at Greys Avenue presently and will move to the new site.

Minimum standards for all organisations on-site will be enshrined in the common rules of site location and participation. These are-

- Recognise and support the State of Israel's right to exist as the independent Jewish State.
- All food preparation facilities in shared spaces will be strictly Kosher.
- The shared site will follow Orthodox ritual/Halacha in accordance with the guidance of the Chief Rabbinate of the Commonwealth.



## 2. Current Status of Beth Shalom moving to Remuera Road

Meaningful discussions are continuing with the Board and representatives of Beth Shalom. Most recently a focus group met to brainstorm common interests for the future of the Jewish community in Auckland.

It is clear Beth Shalom will not have made a decision about moving in time to join the first group of organisations relocating to Remuera Road. Discussions and planning are continuing.



## 3. Future Costs for Members and the next generation

All aspects of the relocation project are being managed carefully with independent professional input as required. It is our intention to deliver a vibrant Jewish Community facility with a flexible and affordable fee structure and a sustainable future.



## 4. Youth Spaces

A group of buildings called the Macky Buildings (to be renamed), which are on the eastern side of the site adjacent to Corren House, have been allocated for youth club rooms. There are four large rooms which can accommodate Bnei Akiva and Habonim Dror Aotearoa if they choose to come on-site.



## 5. More Social Interactions

The vision proposes a club is formed that has the working name, Jewish Auckland. This club is envisaged as being the “glue” which binds all the different people in Auckland who have an affinity to Judaism derived from their social, cultural, religious or geo-political background. Through informal and formal events and availability of physical spaces, Jewish Auckland becomes the central hub for accessing, meeting, socializing and collaborating with like minded people.



## 6. Cafe

Food is at the heart of anything Jewish. It is planned to have a (kosher) Jewish style eatery sited at the corner of Remuera and Ranui Roads. This allows access from locals as well as the Jewish community and securing a corner site is far easier than if the facility was further into the site.

Jewish Auckland will have a food offering to complement events taking place and this is likely to be sourced from the same kitchen. The eatery will include the specialty, meat and kosher food offering from Greys Avenue.



## 7. Inclusivity while maintaining Orthodoxy in Auckland through the next generations

The juxtaposition of the new site being accessible and welcoming to anyone with an affinity to Judaism compared to the narrower halachic definition which defines the Auckland Hebrew Congregation has been raised a number of times.

The AHC will remain focused on providing for the needs of an orthodox community specifically through religious leadership, services, education, pastoral care and halachic guidance. Outside of this, Kadimah will provide school-age education and Jewish Auckland an environment to socialise amongst friends and like-minded people.

The current rules of the AHC will continue to determine our practice of Judaism, therefore there will be no change in how Orthodoxy in Auckland continues and there will be the upside that Jewish Auckland and Kadimah School attracts immigrants to Auckland. This has the potential to bolster the AHC membership with time due to the site being recognised as the centre of the Jewish community in Auckland.

---

## 8. More open to all age groups

Our vision and the new site aim to satisfy spiritual, cultural, social and educational needs in the one place from birth to golden age, as clearly outlined in the draft Vision document.

---

## 9. Religious leadership (what the religious and spiritual leadership will look like)

The heart of the AHC community will remain adherent to orthodoxy and being led and guided by strong, trusted religious rabbinical and youth leadership which concentrates on all matters important to an orthodox community.

Reiterating, 508 Remuera Road makes the AHC more accessible to the majority of members with easier access and opening the possibilities to be more observant.

---

## 10. Volunteering

“Jewish Auckland”, the new club will need different and strong leadership AND volunteers to form and launch the new club. Having a social and cultural bias will make the club aspirational for the wider community who have identified Auckland currently is missing other than the offering of religious communities or specialty organisations.

This is the time for YOU to actively volunteer to be part of this once in a lifetime opportunity to shape the community’s future direction.

# Relocation Q&A

The following are questions asked at the event

## 11. Shule plans and move

A lot of the discussion at Sunday’s meeting was around the new cafe. This was primarily because the Cafe will be a new build and therefore resource and planning consent is required to get this underway when the girls’ school leaves the site.

This has been dominating planning resource from the design team working on the project.

Of more significance for the AHC is the location of the shule which will be located initially inside Corren House. This is the beautiful older building at the northern end of the site which has sweeping views of the grounds and harbour.

Being inside an existing building, with no structural changes required, means resource consent is not needed and therefore the timeframe and resources needed to get a shule established are considerably less.

From a planning perspective, once the deli specifications are finalised and ready to be submitted to council, the design team will move to focusing on the primary requirements for the AHC which is the synagogue space(s) and provision of the Mikvah.

---

## 12. When we think we will move

The trigger for moving to the new site is the completion of the new St Kentigern campus on Shore Road. Currently, their project is running to plan but material supply issues or stoppages due to the pandemic are all real concerns which have the potential to push their timeline out. It is felt that by the start of 2022 their building project end date will be locked in and therefore a moving date for them to vacate the site known.

Assuming they leave in mid-2022, site preparation will be required for Kadimah School to move to Remuera Road. Likewise, the Shule can't move to its new space until this has been prepared.

Realistically, from St Kentigern moving off, the site will be ready for us to take possession three months later. Kadimah moving onto the site will be somewhat dependent on when moving is practicable (eg during a term break or summer holiday break).

A date for the Shule and AHC to move will be known once the Shul space planning is completed and the scope of final works completed, costed and planned. We will update you as this part of the planning process is completed.

---

## 13. Ballpark budget for the new move

There are a number of moving parts to the budget that make providing a realistic number at this point difficult. Once the design for the Shule space, Temporary Pre-School and Mikvah have been completed these can be estimated along with the Deli and a capital works budget finalised to know what is achievable now and with time. We are engaging professionals to provide independent advice in the interests of project and cost control.

As a community, we are very grateful for the financial support that we have received particularly from the Sir Woolf Fisher Charitable Trust (SWFCT), to enable us to move to a brighter future.

We are now working towards a successful exit from Greys Ave, and after an initial marketing campaign, we know that maximising value will be achieved through perseverance in further reducing the heritage impact on the site. With the support of the SWFCT, we have engaged professionals to undertake this task.

This will determine the level of investment we will make at the outset at Remuera. Ultimately, we want to deliver facilities that support a vibrant future.

The projects being scoped for the new site are at their planning stages and the pricing of them is yet to be determined and we will update the Community as we reach milestones of the project.

Key Projects from day one include in order of priority and affordability;

- Site Physical Security (grant of 1.25 million from Govt already secured)
- Mikvah
- Shule space for AHC inside Corran House
- Housing for Religious Employees
- Changes needed for Kadimah School
- Temporary set up of the PreSchool (pending St Kents moving their Preschool 2023)
- Jewish Auckland Club facilities
- Deli Space and eatery
- Formation of the new open square (removal of the science block)

---

## 14. Accommodation on Shabbat

The possibility of providing short-stay accommodation on Shabbat has been raised. We are looking into this, but cost, security issues and health and safety make it a challenging issue on the new site.

## 15. Parking

On-site parking will be limited to employees of the organisations working from Jewish Auckland such as the school, shule, cafe etc. This is because access onto the site will be restricted as part of the security master plan recommendations. Controlled entry for persons with disabilities and school drop off / pick up will be covered in the site management and security planning.

There are significant numbers of parks on the surrounding residential streets with Ranui Street having the closest access.

# Thank you!

For further questions on the vision, contact [office@ahc.org.nz](mailto:office@ahc.org.nz),  
and for relocation questions, contact [relocation@ahc.org.nz](mailto:relocation@ahc.org.nz).